

## Touch Smart Controller

The Touch Smart controller is a microprocessor-based system that offers additional capabilities for control, monitoring and communication compared to our older TrojanUV3000 series controllers. It has been designed by Trojan engineers to offer many of the benefits of PLC-based controllers but at a significantly lower cost.

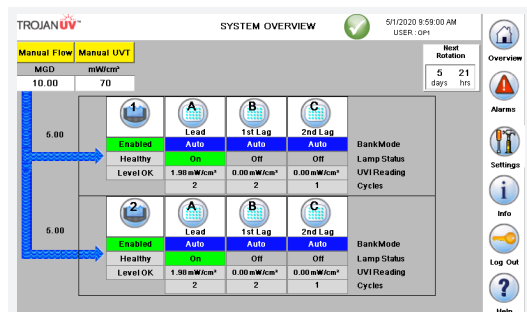
### The Touch Smart Controller is for you if:

You have a TrojanUV3000B or TrojanUV3000Plus system and are looking to:

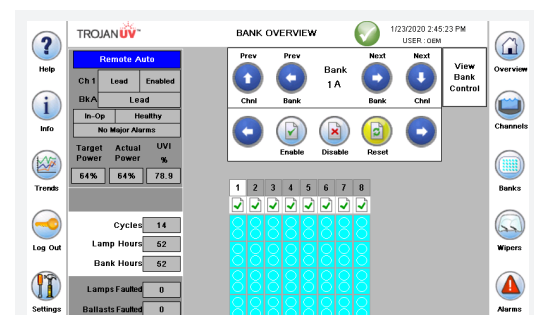
- Upgrade your old System Control Center
- Connect your UV system to the plant SCADA
- Log and trend UV system data
- Monitor and turn your UV system on and off remotely
- Update to a color touch screen interface

### Benefits Include

- Stainless Steel (Type 4X, IP66) enclosure for wall or pedestal mounting
- 7" Color touch screen interface with modern icons for intuitive operation
- High and low water level alarms (if probes installed)
- Inputs and Outputs for flow & UV Transmission signals
- Data logging through USB
- Remote monitoring through SCADA (Modbus Ethernet, Ethernet/IP, Modbus RTU)
- Ability to turn system on and off remotely
- Ability to bring on redundant bank automatically upon alarm condition
- Automatic control for up to 2 channels and 3 UV banks per channel (excluding control of weir or slide gates)
- Option for remote access to HMI screens through VNC viewer



System Overview touch screen interface for the TrojanUV3000B



Bank Overview touch screen interface for the TrojanUV3000Plus

**Table 1:** Touch Smart Controller Features

	TROJANUV3000B	TROJANUV3000PLUS
Configuration		
Max # of Channels	2	
Max Modules/Bank	20	32
Max Banks/Channel	3	
Controls		
Screen Interface	7" Color Touch	
Flow Pacing	Yes	N/A
Dose Pacing	N/A	Yes
Individual Lamp Status	N/A	Yes
Lead Bank Rotation	Auto or Manual	
Redundant Bank Logic	Yes*	Yes
Multiple Lamp Failure	N/A	Yes
Module Failure Alarm	N/A	Yes
Bank Communication Alarm	N/A	Yes
Low Water Level	Yes (requires low level probe to be installed)	
High Water Level	Yes (requires high level probe to be installed)	
USB Data Logging	Yes	
Remote Control Capabilities		
Force System on/off	Yes (DI)	N/A
System enable/disable (runs in auto)	Yes (DI)	Yes (DI or SCADA)
Turn on one additional bank (if available)	Yes (DI)	N/A
Remote Monitoring Capabilities		
SCADA Protocols	Standard: Modbus Ethernet or Ethernet/IP Optional: Modbus RTU All remote monitoring signals available on SCADA	
Bank Status	Yes	
Common Alarm	Major, Minor	Critical, Major, Minor
Low UV Intensity Alarm	Yes (DO)	
Bank UV Intensity Alarm	Yes (SCADA only)	
Average UV Intensity	Yes (analog out)	N/A
Inputs/Outputs		
Discrete Inputs	8	5
Discrete Outputs	8	8
Analog Inputs	1 - Effluent Flow	2 (flow and UVT)
Analog Outputs	1 - Average UV Intensity	Multiple

\* For TrojanUV3000B, redundant bank logic is driven by a single lamp failure OR low UV intensity as there is no multiple lamp failure alarm

## Ask More Questions and/or Start Planning

We're here to help. If you have questions or are ready to start planning your Touch Smart upgrade, simply call us at **1-866-388-0488**, visit **[trojanuv.com/contactus](http://trojanuv.com/contactus)**, or contact your local sales and service representative.



For a list of our global offices, please visit **[trojanuv.com/contactus](http://trojanuv.com/contactus)**.